



Rainbow Connection

"providing homes for people with developmental disabilities"

A RAINBOW VILLAGE NEWSLETTER

• Spring 2008 Issue

Somewhere Over The Rainbow There's No Place Like Home



The 12th Annual dinner-auction will be held on **Friday, April 11, 2008**. Join us for a fabulous evening at the **Marriott St. Louis West**.

Being honored with The Tice Humanitarian Award is **Jerry Zafft**. The event is sponsored by **Fox 2 KTVI**, with **Kevin Steincross** as Guest Host.

Proceeds from this year's event will go towards expanding the number of community homes for adults with developmental disabilities.

Silent auction items will include dining in many of St. Louis' great restaurants, beautiful jewelry items, tickets to some of St. Louis' finest events, your favorite sports memorabilia, and **much, so much more!**

Individual tickets are \$150, tables of ten for \$1,500. Sponsorship opportunities are available for \$2,500, \$5,000 and \$10,000.

The evening will feature incredible oral auction items:

- Week long stay in Florida condo
- Fabulous gourmet dinners
- Dinner and sleigh ride through Tilles Park Winter Lights display

To make a reservation or to donate an auction item call 314-567-1522 x 201



Growing Better in 2008

Rainbow Village Board of Directors, as part of their strategic plan, has hired an independent research firm to capture suggestions and opinions on how we can achieve maximum success in our fundraising and operations. This initiative will obtain feedback on how we can best serve the needs and interests of our residents and family caregivers, as well as our agency partners and donors. They will conduct focus groups and survey interviews on behalf of Rainbow Village.

Participants will include a random selection of family members or guardians, donors, agency partners, board members and staff. Survey interviews will also be conducted with agencies and donors who are currently not affiliated with Rainbow Village to assess the community's level of awareness and image of the organization.

Focus groups and telephone interviews will begin in February. Responses will be reported at the group level, with individuals remaining anonymous. We hope that you will agree to participate, if called. Individuals who do not wish to participate may contact Jo-Ann Goldstein at 314-567-1522, ext 201 or jgoldstein@rbvstl.org to indicate their preference.

A summary of the survey results will be posted on the Rainbow Village website (rainbowvillagestl.org) at the conclusion of the research (May 2008).

Thank you in advance for your participation in helping Rainbow Village achieve its mission of providing more homes for people with developmental disabilities in the community.

Volunteers

St. Louis University Students on 10/27/07 'Make a Difference Day' raked leaves and took down decorations on the main Rainbow Village campus.



Ellisville Methodist Church Special Needs Ministry Group volunteered on 10/13/07. They stained the fence and weeded at a community home.



Colliers Turley Martin Tucker employees volunteered on 11/16/07. They raked leaves and put in edging at a community home.



Dennis volunteers every Friday. He cleans the gym floor and the office windows at Sunnen Community Center.



Des Peres Rotary members volunteered on 11/10/07. They stained two park benches and raked leaves on the main Rainbow Village campus.



National Volunteer Week April 27-May 3, 2008

National Volunteer Week reflects the power that volunteers have to "inspire by example" — volunteers both encourage those they help and motivate others to serve!

If you, your company or group would like to volunteer, please contact us at 314-567-1522, ext 207.

Rainbow Village Opens 46th Home for Individuals with Developmental Disabilities

On Thursday, November 8, 2007, over 100 people attended the opening of our new 'green' handicapped accessible home in St. Louis County that now houses six women with developmental disabilities. Many representatives of county government, foundations, corporations and individuals that donated money towards the home attended the ribbon cutting.

Three of the six residents cut the ribbon, along with St. Louis Arc support staff and St. Louis County Executive, Charlie Dooley. Also attending were Rainbow Village board members and donors.





Our New Home



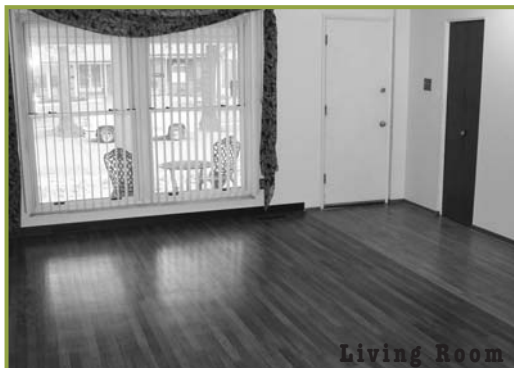
Hazelwood

Our newest Rainbow Village home is in Hazelwood. One of our partners, Cooperative Home Care, requested that we find a suitable home for three men. They had been living together for several years in a Hazelwood house that was owned by a private individual. The house was sold and the men were left without a place to live.

A very nice three-bedroom, two and half bath ranch home was found just blocks away from the men's previous residence. This made their adjustment easier because the men are comfortable and familiar with the neighborhood and its surroundings. We purchased the house in December 2007 and the men moved in on February 1, 2008. Major support for the home's purchase was provided by the **Productive Living Board** in St. Louis County and the **Orthwein Foundation**.

To make the home safer and more comfortable, several renovations were made before the move-in. New thermal windows replaced damaged and leaky windows, hardwired smoke and carbon monoxide detectors were installed and electrical wiring was updated. Old carpeting was removed and replaced by vinyl and existing hardwood floors were refinished. All of these improvements will allow the residents to have safer and more hygienic conditions for their long-term living arrangements.

The residents are Richard, Shawn and David. Shawn and David have been roommates since their teenage years and Richard joined them six years ago. Richard, age 27, enjoys many outdoor activities like swimming, Cardinal baseball games and going to many of our city's great attractions. Shawn is 29 and enjoys going out, dancing, music and all sporting activities.



Living Room

David is 25, is very energetic and humorous. He loves music, dancing and going out to eat. The support staff of Cooperative Home Care said that "the guys enjoy living in a home that is owned by caring people who support their individual needs". ☺

THANKS!

To those who have made major contributions since September 2007. We greatly appreciate all of your help as we work towards expanding the number of Rainbow Village homes in our community.

For the new villa:

**Anonymous
Lutheran Foundation
Nurture Foundation
Emerson Charitable Trust
Harvey Kornblum Foundation
Bernard Charitable Trust
Realtors Housing Assistance Fund**

For the Fall Appeal:

Many friends of Rainbow – Total \$19,590

For 2008 Purchase of New Homes:

**Orthwein Foundation
Sidener Foundation
Society of Industrial and Office Realtors
Zelson Charitable Trust**

AHAP Tax Credits:

**Edith Wolff
Consolidated Financial Investments
Lydia Rasis
Jim Fogle
Norm Tice
Ker-Mac Construction**

\$ Affordable Housing Assistance Program – Tax Credits \$ \$ \$ \$ \$

Help provide affordable housing for people with developmental disabilities and you may receive up to \$740 of Missouri and Federal tax benefits for every \$1,000 you donate to Rainbow Village.

The State of Missouri offers income tax credits to residents who make qualifying contributions to agencies that create special affordable housing. The state does this to encourage support for proven, effective programs. Rainbow Village is one of these agencies.

If you make a contribution to support our programs of providing homes for people with developmental disabilities, the state will reward you for your generosity with a state income tax credit.

Call Jo-Ann at 314-567-1522 x 201 for more information.

Board of Directors

- | | | |
|-------------------------------|--|--------------------|
| Sheldon Baron | Frederick A. Hermann | Matthew Thayer |
| Myron Bernard | James J. Lansing | Nancy Parker Tice, |
| Alan Broddon | Jeffrey Mishkin | President |
| A. Van L. Brokaw | John M. Napoli | Norman Tice |
| Beth Bushke | Joan T. Perry | Thomas K. Vandiver |
| Richard Daly | Janet T. Ramey | Steven Wald |
| Jill L. Dowd | Robert Rives | Paul Wuennenberg |
| Jim Fogle | Lou Ellen Ruocco | Gerald J. Zafft |
| George Gladis | Greg Schuster | Joseph Zelson |
| | Molly Tallarico | |
| Lydia Rasis | Renee Shields | |
| Director of Operations | Executive Assistant | |
| | Jo-Ann Goldstein | |
| | Associate Director of Development | |

Mission Statement

Rainbow Village provides high quality homes and recreational facilities in the St. Louis Metropolitan Area for people with developmental disabilities, enabling each resident to be the best that he or she can be.



Visit our website at: www.rainbowvillagestl.org

